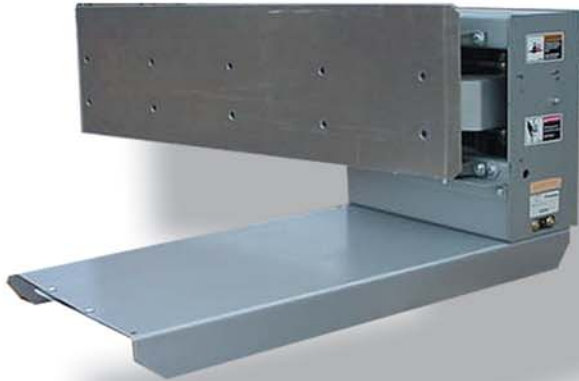




AutoSort 4 - Flat Face Arm Sorter



MECHANICAL CHARACTERISTICS

High Speed

Nominal Conveyor Widths:

24", 30" & 36"

Sort Rate Capacity:

Up to 60 Cartons Per Minute on Sortation Belt Conveyor running up to 450 Feet Per Minute. Sort rate is dependant upon carton size & weight and system design.

Carton Weight Capacity:

Up to 75 pounds, depending on sort rate and system design.

Compatible Conveyor:

Automotion high speed slick top belt sortation conveyor.

Air Requirements:

Nominal operating pressure is 80 psi.

FEATURES

Automotion's High Speed Flat Face Arm Sorter can be used as an integral sortation component in almost any conveyor system. Automotion's High Speed Induction Conveyor strategically gaps and places the product onto the Automotion Sortation Belt Conveyor. The High Speed Flat Face Arm Diverter is precision timed to swing out and make contact with the product to be sorted at a controlled rate of acceleration to provide a gentle sweeping divert action.

The High Speed Flat Face Arm Sorter provides flexibility and effectiveness in handling and separating a wide range of packaged goods and materials. The arm is air operated and can be controlled manually or remotely to meet your specific sortation requirements.

The Divert Arm gently sweeps the carton off onto a powered or non-powered takeaway conveyor for further disposition.

For added flexibility, the High Speed Flat Face Arm Sort Stations are designed to be used with Automotion's standard belt conveyor fitted with slip top belting.

SPECIFICATIONS

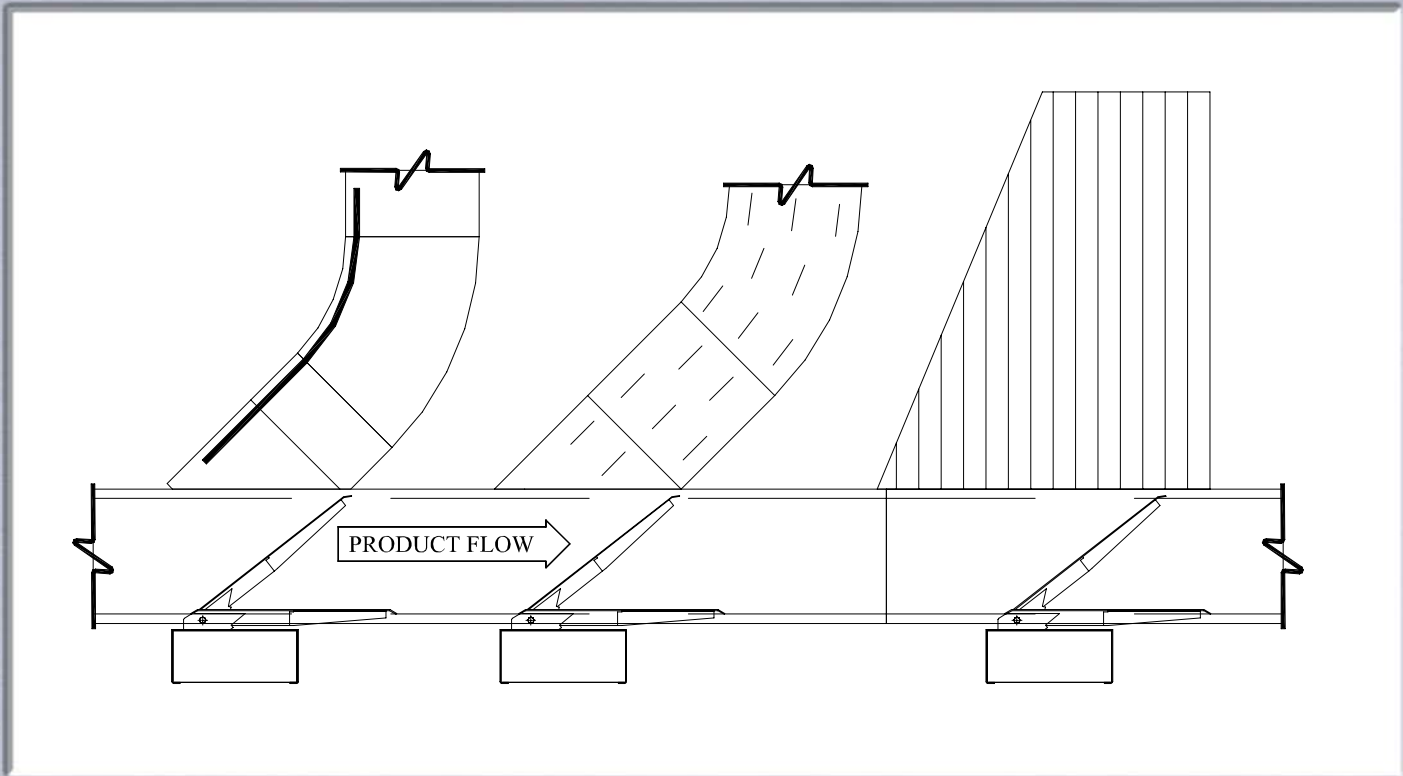
Typical Applications:

Shipping Sortation
Receiving Sortation

Sortation Belt Conveyor Live Load Capacity:

Up to 100 lbs/ft. depending on width, roller centers, supports, etc.





11000 South Lavergne Avenue Oak Lawn, Illinois 60453-5500
Phone: 708-229-3700 Fax: 708-229-3799
www.automotionconveyors.com
info@automotionconveyors.com